



HANDCRAFTED SHOES & BAGS - LOOKBOOK FALL/WINTER '17/'18





**PRESTON**  
**MEN'S OXFORD SHOE**

LIMITED PRODUCTION

IF WE HAD TO CHOOSE ONE GENTLEMEN'S SHOE TO HAVE  
IN OUR WARDROBE, IT WOULD HAVE TO BE THE OXFORD SHOE.  
METICULOUSLY HANDCRAFTED AND IMPRESSIVELY DESIGNED,  
THE PRESTON SHOE DISPLAYS EMBROIDERY IN BRAILLE WRITING  
THAT TELLS A STORY OF LOVE AND STATEMENT SHOES.





## LOU FRINGES SHOULDER BAG

AS ITS NAME INDICATES, LOU IS A COMEBACK STORY DECLARING THAT THE 70s ARE HERE TO STAY. NOTHING COULD BEST ENHANCE AND COMPLETE YOUR BOHO-CHIC LOOK THAN THIS SPACIOUS AND CONVENIENT SHOULDER BAG. YOUTHFUL, FREE SPIRITED AND A DARING SHOWSTOPPER, THIS DESIGN IS DEFINITELY YOUR GO-TO ACCESSORY THIS FALL.



## LETTY MID CALF BOOT

LIMITED PRODUCTION

MID CALF BOOTS, A MIDI FLARED SKIRT AND A TURTLENECK IS THE TRIPTYCH OF THIS SEASON'S UNPARALLELED CHIC LOOK. THIS ALL TIME CLASSIC BOOTIE LENGTH MADE WITH LIGHTLY-COLOURED STAINED LEATHER, IDENTICAL TO THE GREASE STAINS ON THE LINT SITTING IN THE GARAGE, PROVES THAT ALTERNATIVE AND AUTOMOTIVE LOOK CAN BE FEMININE AND STYLISH AS WELL.





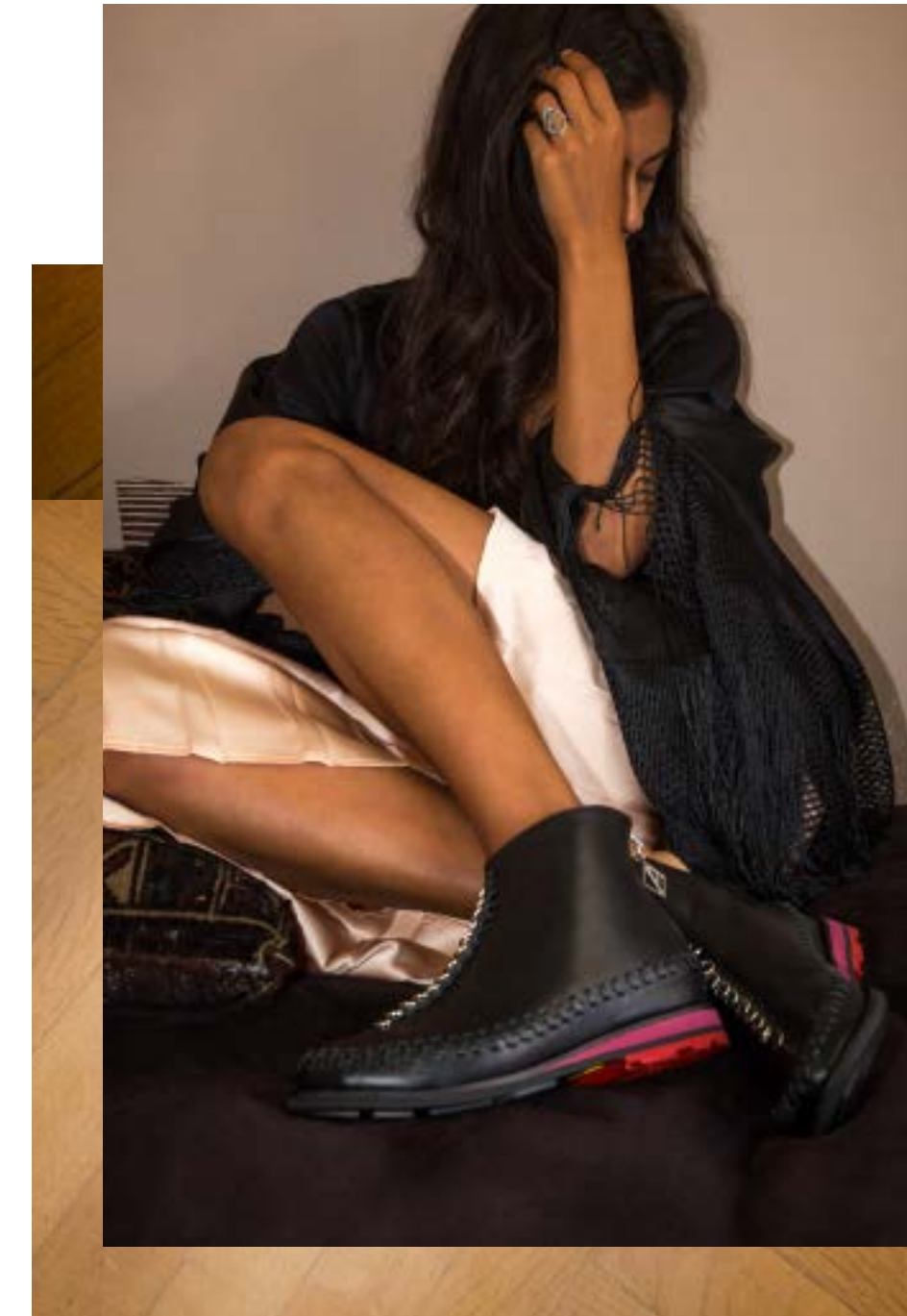
## LOLA

### HIGH HEEL OPEN TOE ANKLE BOOT

LIMITED PRODUCTION

SEXY YET WITH A TOUCH OF GRUNGE STYLE,  
THIS HIGH HEEL PEEP TOE MADE OF  
TRANSPARENT MATERIAL, BLACK LEATHER  
AND GREY METALLIC LEATHER REPRESENTING  
THE MOTIF OF THICK DROPS OF GASOLINE IN  
MOTION IS THE UPDATED VERSION OF SKY  
HIGH ANKLE BOOT.





**ZOE**  
**FLAT ANKLE BOOT**

LIMITED PRODUCTION

CLASSIC BUT WITH A TWIST, WITH ITS INTRICATE LACE UP DETAILING ALONG THE FRONT OF THE SHOE, ZOE IS AS EYE-CATCHING AS EVER. MINIATURE METAL RING ACCESSORIES NORMALLY SEEN ON A CAR ARE INTERTWINED INTO A LEATHER BRAID, TAKING THIS ALL TIME CLASSIC BLACK BOOTIE TO THE NEXT LEVEL.



# IRENE

## IDP ANKLE BOOT

LIMITED PRODUCTION

THIS RUBY RED ANKLE BOOT SUPPORTED BY A QUIRKY SHAPED WOODEN PINK HEEL IN THE FORM OF A NUT SCREW BOLTED TO THE SHOE WILL NO DOUBT GO UNNOTICED. IN RED AND PINK, THIS SHOE FLAUNTS THE COLOR COMBINATION OF THE YEAR AND ALONG WITH ITS SHOWSTOPPER HEEL, IT WILL ONLY LEAVE YOU WANTING MORE.







**COCO**  
**CLUTCH BAG**

CLASSIC AND FEMININE, YET CRISP AND STRUCTURED, COCO EVOKES A VINTAGE TOUCH WITHOUT LOSING ITS MODERN ATTITUDE. IN THE PERFECT SIZE, A SHOUT-OUT TO THE RETURN OF THE CLUTCH, THIS DESIGN MADE OF LEATHER IN CROCO EFFECT IS THE EPITOME OF UNPARALLELED CHIC.

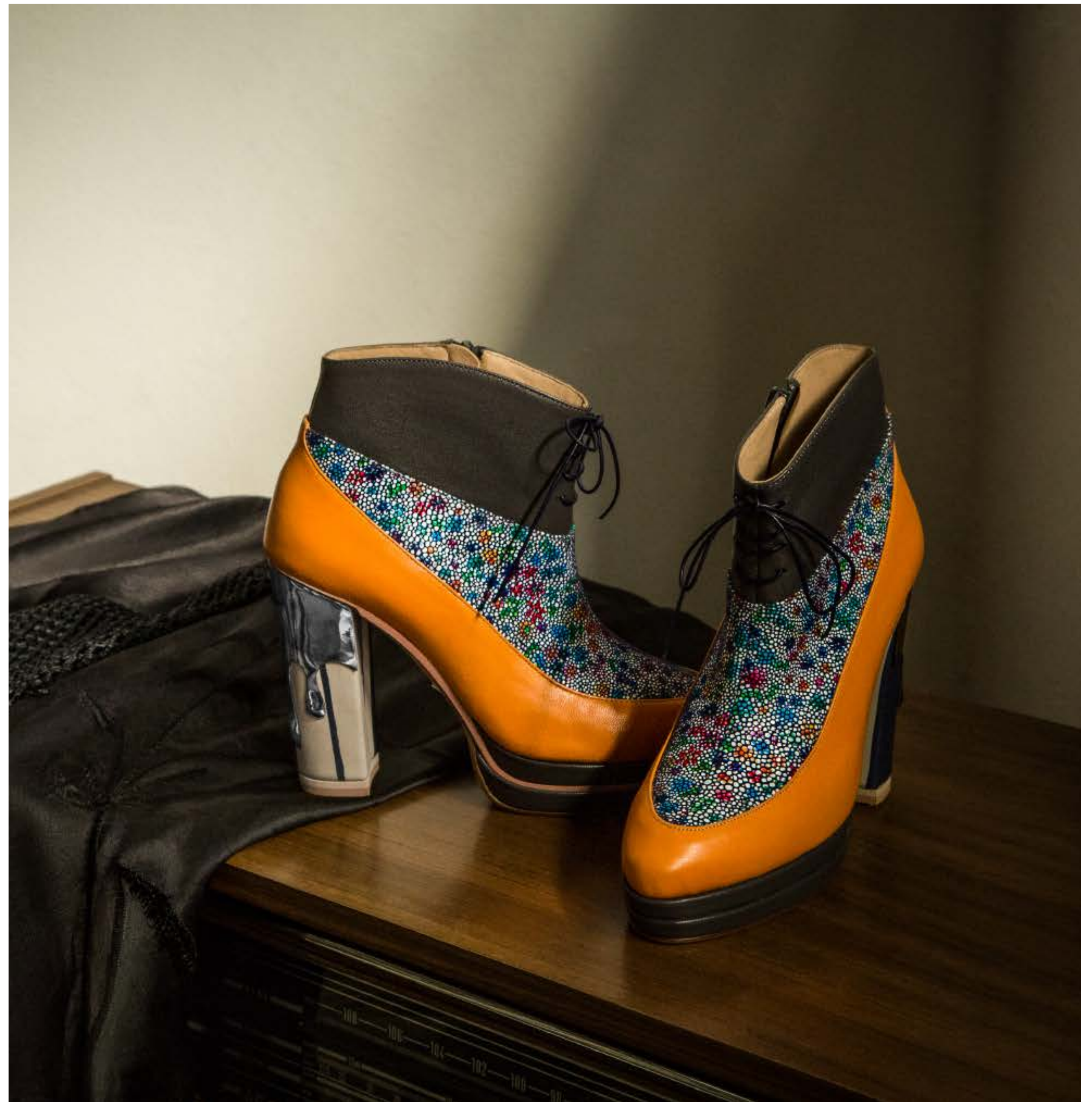




**JUDY**  
**BLOCK HEEL ANKLE BOOT**

LIMITED PRODUCTION

THIS SEASON THE 'MORE IS MORE' ATTITUDE IS EXACTLY WHAT YOU NEED. THIS ECCENTRIC HIGH HEELED ANKLE BOOT IS EMBELLISHED WITH A BEAUTIFUL BLEND OF FLORAL FABRICS AND BRIGHT LEATHER STRAPS JOINING A SILVER GASOLINE DROP COATING THAT CARESSES ITS ELEGANT BLOCK HEEL. IT IS THE EPITOME OF TREND FOR THIS FALL.





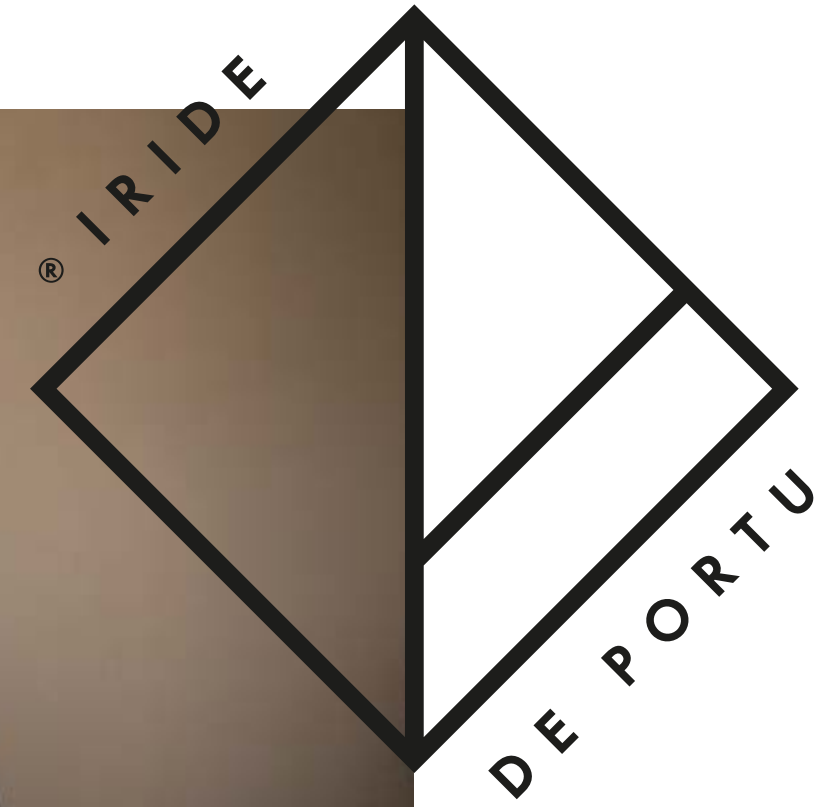
**BLANCHE**  
XMAS EDITION ANKLE BOOT

SPECIAL EDITION

A SEXY, VIBRANT ROCK STAR. THAT'S BLANCHE - NOTHING MORE AND NOTHING LESS THAN A PAIR OF GOLDEN ANKLE BOOTS. COMBINING TWO OF THE BIGGEST TRENDS THIS SEASON, BOTH GLAMOROUS AND UNPRETENTIOUS, THIS ANKLE BOOT CAN INSTANTLY TRANSFORM ANY OUTFIT.







24-26 PALLADOS STR. ATHENS GREECE +30 210 32 55 119

[WWW.IRIDEDEPORTU.COM](http://WWW.IRIDEDEPORTU.COM)