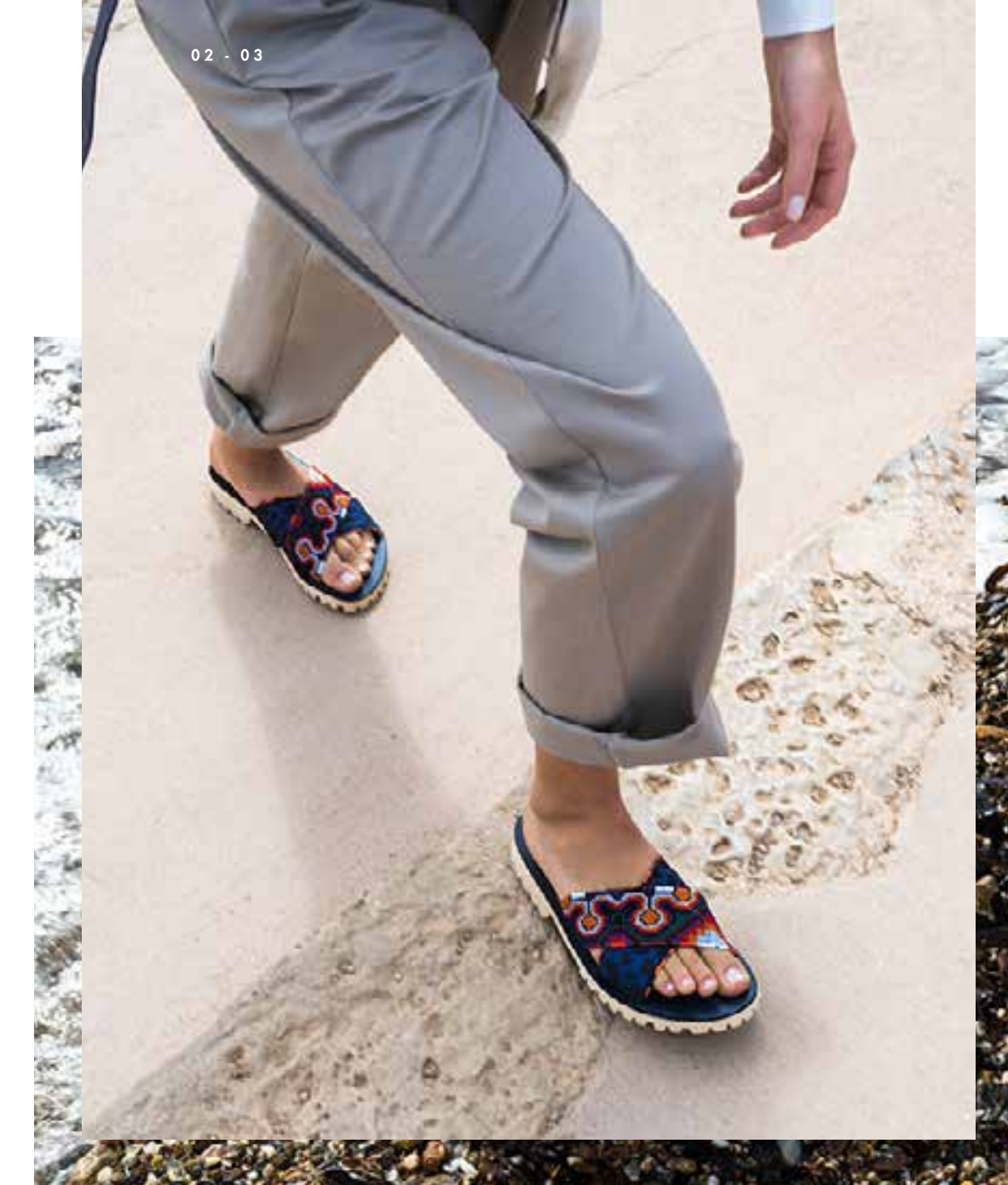




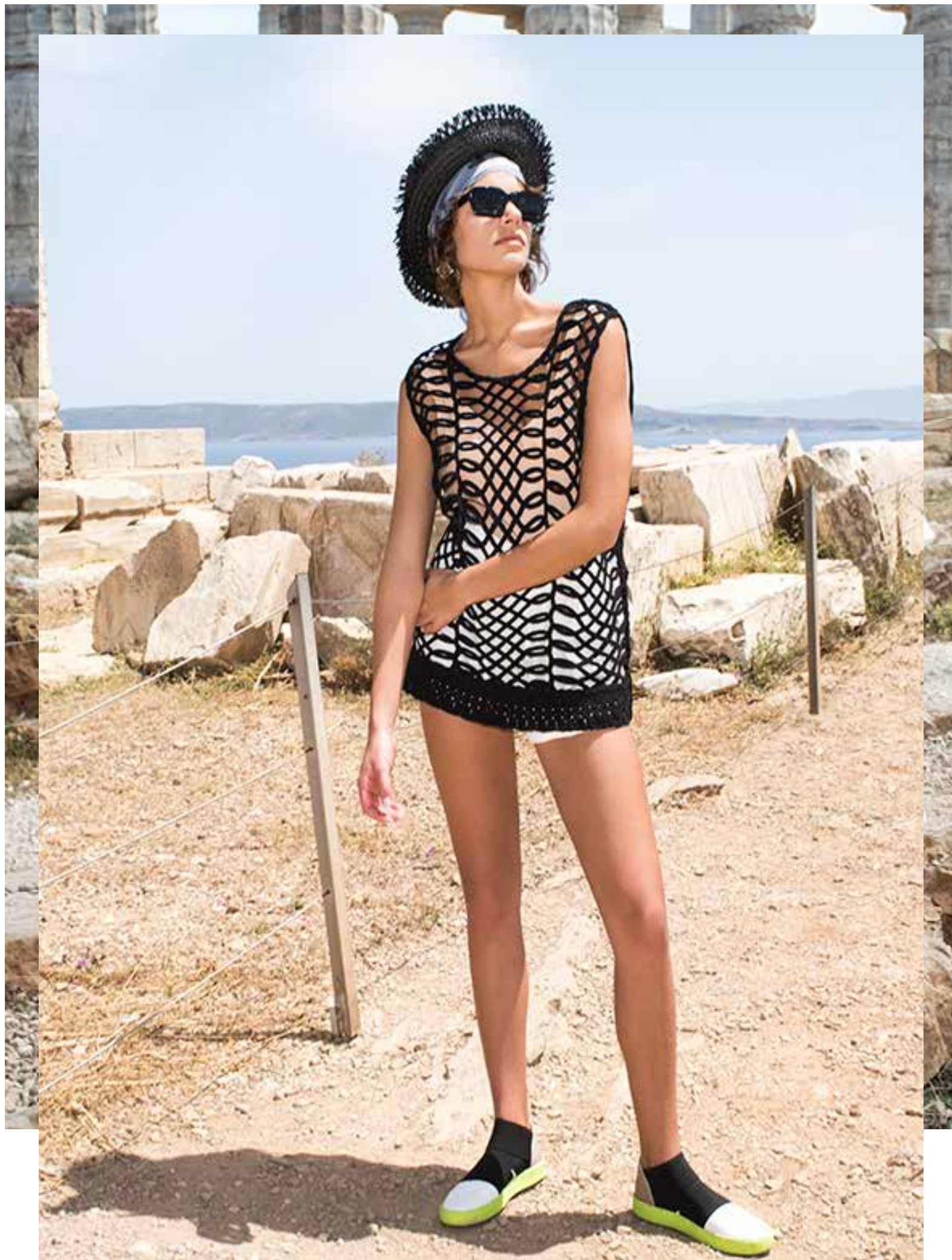
HANDCRAFTED SHOES & BAGS - LOOKBOOK SPRING/SUMMER '17



LEANDRA SANDALS

LIMITED PRODUCTION

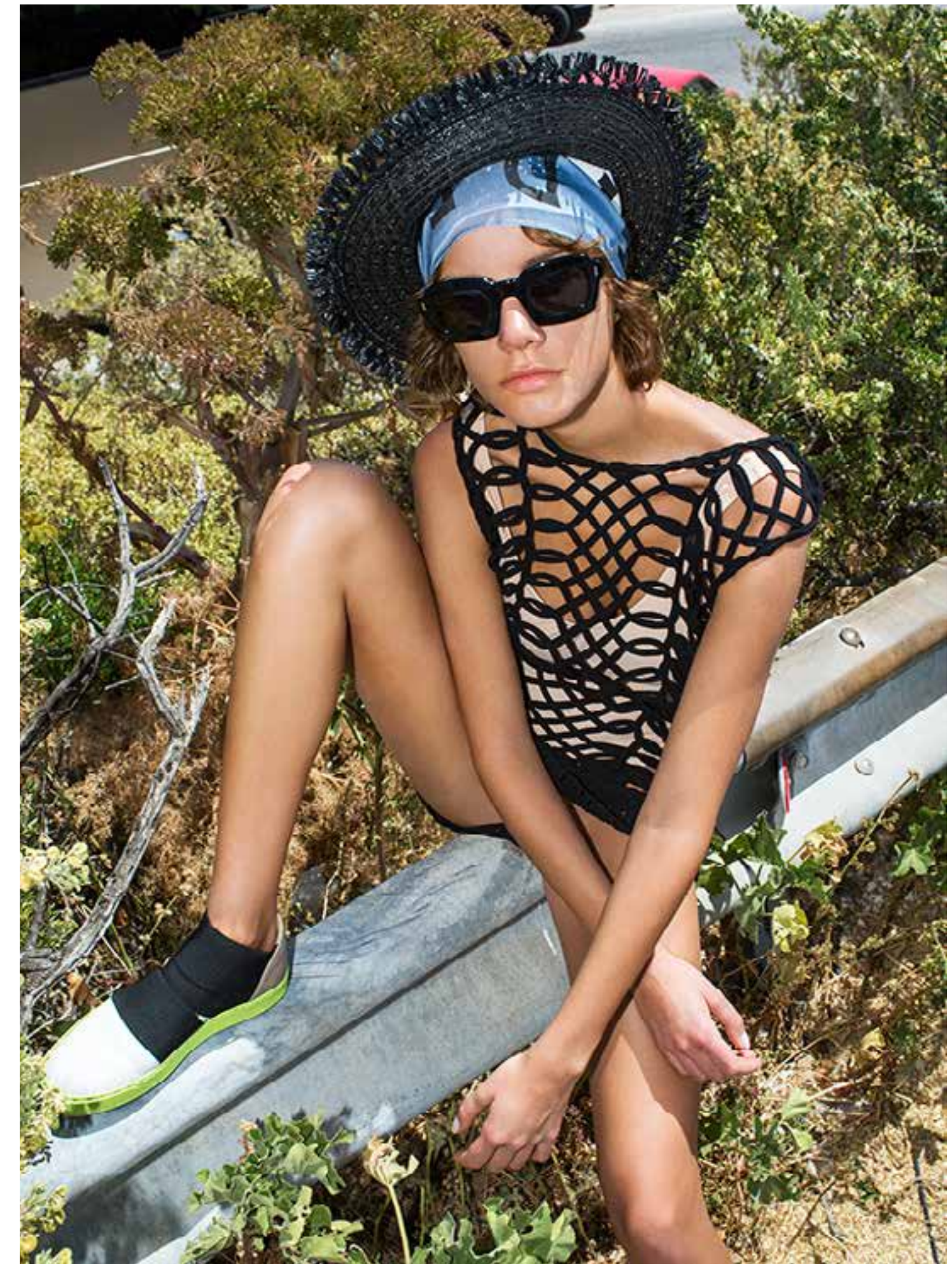
THE LEANDRA SANDALS BOAST A TRACTOR VIBRAM SOLE, LEATHER LININGS AND A BLUE LEATHER SHOE BOTTOM THAT ADD AN ETHNIC FLAIR TO THE LOOK, MOREOVER, THE CROSSOVER STRAPS THAT CARESS THE FOOT HAVE BEEN EMBROIDERED BY HAND WITH HUNDREDS OF MULTICOLORED BEADS.



ANDRIANNE
SPRING SNEAKERS

LIMITED PRODUCTION

THE SNEAKER BOOTS ANDRIANNE WITH THEIR CHARACTERISTIC FLORESCENT GREEN VIBRAM SOLE, LEATHER LININGS AND SHOE BOTTOM OFFER A SENSE OF FREEDOM THANKS TO THEIR ERGONOMIC DESIGN AND WIDE ELASTIC STRAPS THAT CARESS THE FOOT.





MONTEREY PLATFORMS

LIMITED PRODUCTION

THE MONTEREY PLATFORMS WITH
A 5CM SOLE LIFT, LINED WITH
NATURAL COLOURED BRAIDS, AN
ANATOMICAL OUTSOLE WITH
LEATHER SHEATHING AND THREE
STRAPS - TWO IN SUPER-CHIC
COWHIDE AND ONE IN DENIM - ALL
LINED WITH LEATHER, DEFINE THE
EPITOME OF THE ALL DAY PLATFORMS.

LANA PLATFORMS

LIMITED PRODUCTION

THE LANA PLATFORMS WITH A 5 CM SOLE HEIGHT LINED IN DENIM, AN ANATOMICAL OUTSOLE WITH LEATHER SHEATHING AND GREY TONED DENIM EMBELLISHED WITH METALLIC RINGS THROUGH WHICH SILK SATIN RIBBONS PASS THROUGH, BOTH CHARM AND ATTRACT THANKS TO THEIR VERSATILE AND ADJUSTABLE NATURE.



09 - 10



HARPER SHOULDER BAG

STRUCTURED BUT WITH SOFT CURVES AND EMBELLISHED WITH METALLIC STUDS, THIS UNUSUAL DESIGN, A FLAT FINISH ON THE LID OF THE BAG AND A WIDE SHOULDER STRAP, RIGHTFULLY IDENTIFIES HARPER AS A STATEMENT ACCESSORY.

GARANCE BALLET FLATS

LIMITED PRODUCTION

FEMININE AND ECCENTRIC, THE BALLET PUMPS GARANCE BOAST A BRAIDED LEATHER TOE, A PLEATED SILK ADJUSTABLE STRAP, COLOURFUL STUDS AND 2,5 CM HIGH LEATHER SOLES, ALL OF WHICH STAND FOR THE NEW MUST HAVE FOR FLAT SHOE LOVERS.





GLORIA
D' ORSAY PUMPS

LIMITED PRODUCTION

ELEGANT AND CLASSIC BUT WITH A TWIST, THE D' ORSAY PUMPS GLORIA BOAST A BRAIDED LEATHER TOE, A PLEATED SILK ADJUSTABLE STRAP, COLOURFUL STUDS AND A HEEL CARESSED IN LEATHER EXPRESSING THE TRUE ESSENCE OF MODERN DAY FEMININITY.

JADE
BACKPACK

UNIQUE COLOUR COMBINATIONS, SOFT LEATHERS AND DURABLE MATERIALS. THE JADE BACKPACK HAS NOT BEEN DESIGNED TO SIMPLY OFFER COMFORT AND FUNCTIONALITY, BUT TO GIVE MANY DOSES OF STYLE TO ACCOMPANY EVERY URBAN LOOK- IT DEFINES THE PERFECT MIX-AND-MATCH AESTHETIC.





MAY
MINI SHOULDER BAG

GEOMETRIC, MINIMAL AND ECCENTRIC, MAY OVERTURNS THE STATUS QUO IN DESIGN WHETHER WORN OVER THE SHOULDER, CROSSED OVER OR EVEN TIED AROUND THE WRIST, MAY TURNS EVERYTHING ON ITS HEAD, "CONCEALING" ITS ZIP ALONG THE BOTTOM SIDE OF THE BAG.



JANE
DENIM PLATFORMS

LIMITED PRODUCTION

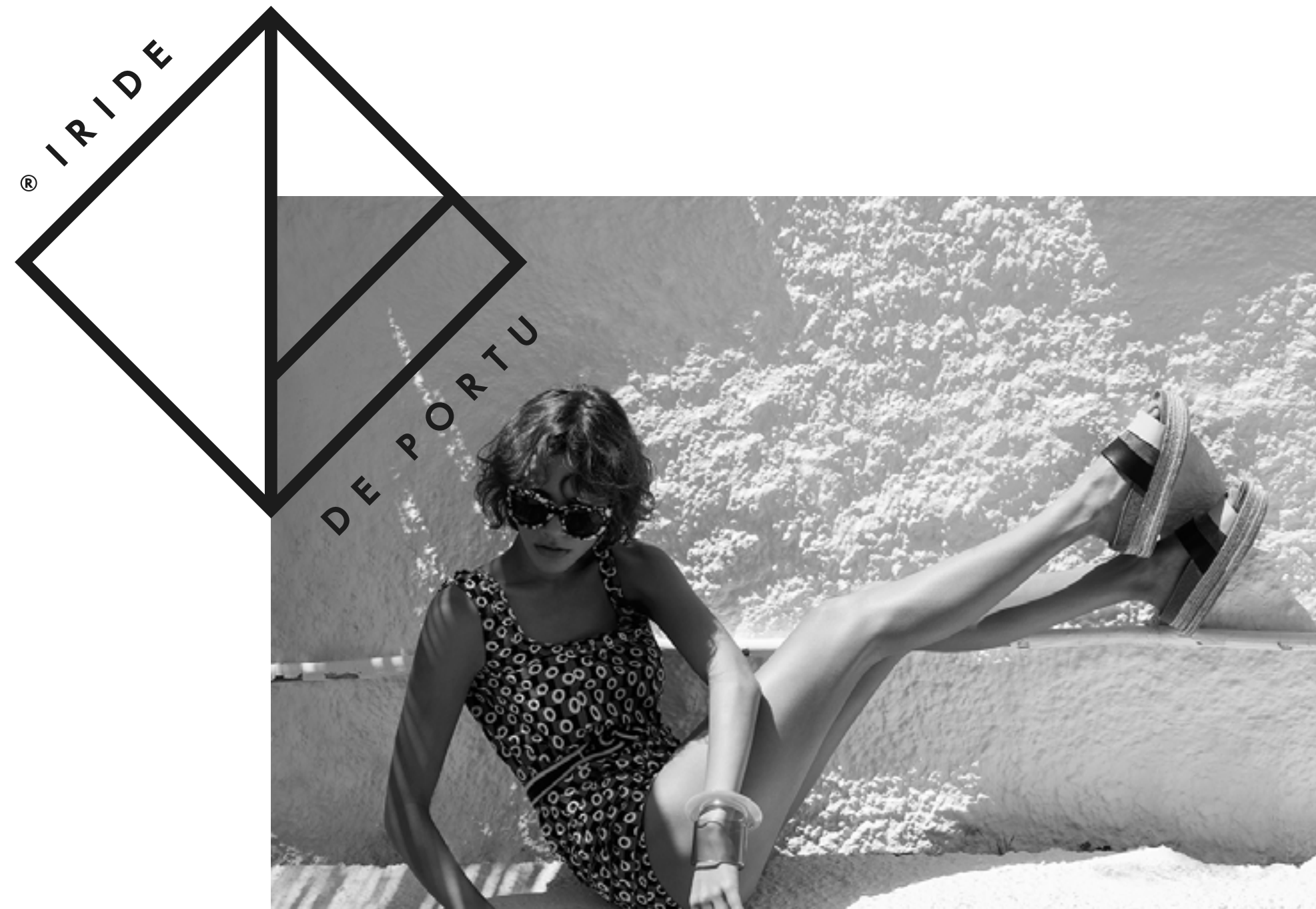
THE OPEN-TOE PLATFORMS JANE WITH A 5CM PLATFORM HEIGHT AND A NON-SLIP VIBRAM SOLE, SHOE-LACES AND A DECORATIVE SCARF THAT TIES AROUND THE ANKLE IMPRESS THANKS TO THEIR DENIM EFFECT LEATHER AND A KNITTED BLACK AND WHITE SEAM.



D'LILA
CLUTCH BAG

FUNCTIONAL, POLYMORPHIC AND A REBEL AT HEART,
D'LILA PROVES THAT UNDERGROUND ELEMENTS CAN
TRANSFORM A MINIMAL DESIGN TO A STANDOUT ITEM.
BLACK LEATHER, ADORNED WITH A THICK ZIP AND A HOOK
ON THE SIDE, THIS BAG BECOMES A FAVORITE AMONGST
ALL STREET STYLE ADVOCATES.





24-26 PALLADOS str. ATHENS GREECE +30 210 32 55 119
WWW.IRIDEDEPORTU.COM